

## IBWA STANDARD OF QUALITY REPORT

Customer Name: Crystal Springs Bottled Water  
Customer Address: 4446 Anaheim Ave, NE  
Albuquerque, NM 87113

Page 1 of 13

Sample Date: 5/8/2024  
Sample Description: DI  
Date Reviewed: 6/12/2024

Sample I.D. 2405189  
Report Date 6/12/2024

### Inorganic Chemicals (IOCs)

CAS ID#	COMPOUNDS	RESULT	SOQ	MRL	Units	Method
7440-36-0	Antimony	ND	6.00	2.00	ug/L	200.8 R5.4
7440-39-3	Barium	ND	1,000.00	10.00	ug/L	200.7 R4.4
7940-41-7	Beryllium	ND	4.00	0.10	ug/L	200.8 R5.4
	Bromate (BrO3) <sup>***</sup>	ND	10.00	2.50	ug/L	300.1
7440-43-9	Cadmium (Cd)	ND	5.00	0.10	ug/L	200.8 R5.4
	Chloramine	ND	4.00	0.02	mg/L	330.5
	Chlorine Dioxide	0.07	0.80		mg/L	STND 4500
	Chlorine, Free	0.06	0.10		mg/L	330.5
	Chlorine, Total	0.06	0.10		mg/L	330.5
7440-47-3	Chromium	ND	50.00	1.00	ug/L	200.8 R5.4
16984-48-8	Fluoride	ND	3.00	0.20	mg/L	300.0 R2.1
	Free Chlorine	0.06			mg/L	330.5
7439-92-1	Lead (Pb)	ND	1.00	1.00	ug/L	200.8 R5.4
7439-97-6	Mercury (Hg)	ND	1.00	0.20	ug/L	245.1 Rev. 3
7440-02-0	Nickel (Ni)	ND	100.00	10.00	ug/L	200.7 R4.4
	Perchlorate	ND	2.00	2.00	ug/L	314.0
7782-49-2	Selenium (Se)	ND	10.00	2.00	ug/L	200.8 R5.4
7440-28-0	Thallium (Tl)	ND	2.00	1.00	ug/L	200.8 R5.4
7440-38-2	Total Arsenic	ND	10.00	1.00	ug/L	200.8 R5.4
	Total Chlorine	0.06			mg/L	330.5

N.D. - Indicates that the compound was not detected above the Lab's Reporting Limit - MRL

N.A. - Indicates that the compound was not analyzed.

SOQ - Standard of Quality, maximum permissible level of a contaminant in water established by EPA, NPDWR or IBWA.

MRL - Method Reporting Limit.

NA=Not Analyzed      ND=Not Detected      \*=non-TNI accredited      \*\*=IL-IDPH accredited      \*\*\*= MT accredited

## IBWA STANDARD OF QUALITY REPORT

### Secondary Inorganic Parameters

CAS ID#	COMPOUNDS	RESULT	SOQ	MRL	Units	Method
7429-90-5	Aluminum Chloride	ND	200.00	2.00	ug/L	200.8 R5.4
7440-50-8	Copper (Cu)	ND	1.00	0.02	mg/L	200.7 R4.4
	Est TDS By Conductivity	1.60	500.00		mg/L	
7439-89-6	Iron (Fe)	ND		0.05	mg/L	200.7 R4.4
7439-96-5	Manganese (Mn)	ND	0.05	0.02	mg/L	200.7 R4.4
7440-22-4	Silver (Ag)	ND	25.00	0.10	ug/L	200.8 R5.4
14808-79-8	Sulfate	ND	250.00	0.85	mg/L	300.0 R2.1
7440-66-6	Zinc (Zn)	ND	5.00	0.05	mg/L	200.7 R4.4

N.D. - Indicates that the compound was not detected above the Lab's Reporting Limit - MRL

N.A. - Indicates that the compound was not analyzed.

SOQ - Standard of Quality, maximum permissible level of a contaminant in water established by EPA, NPDWR or IBWA.

MRL - Method Reporting Limit.

NA=Not Analyzed      ND=Not Detected      \*=non-TNI accredited      \*\*=IL-IDPH accredited      \*\*\*= MT accredited

NELAP Certifications: IL-100213; PA-68-04623; NY-11756; TX-TX269-2007A

State Certifications: IL-IDPH-17598; CA-2958; MT-CERT0091; IA-369; VT-VT02199; WI-399016200;

CO-IL100213; MI-9988; VA-00466

Maria Mozdzen  
Analytical Lab Manager

## IBWA STANDARD OF QUALITY REPORT

### Additional Regulated Contaminants

CAS ID#	COMPOUNDS	RESULT	SOQ	MRL	Units	Method
7440-61-1	Uranium (U)	ND	30.00	2.00	ug/L	200.8 R5.4

N.D. - Indicates that the compound was not detected above the Lab's Reporting Limit - MRL

N.A. - Indicates that the compound was not analyzed.

SOQ - Standard of Quality, maximum permissible level of a contaminant in water established by EPA, NPDWR or IBWA.

MRL - Method Reporting Limit.

NA=Not Analyzed      ND=Not Detected      \*=non-TNI accredited      \*\*=IL-IDPH accredited      \*\*\*= MT accredited

NELAP Certifications: IL-100213; PA-68-04623; NY-11756; TX-TX269-2007A

State Certifications: IL-IDPH-17598; CA-2958; MT-CERT0091; IA-369; VT-VT02199; WI-399016200;  
CO-IL100213; MI-9988; VA-00466

Maria Mozdzen  
Analytical Lab Manager

## IBWA STANDARD OF QUALITY REPORT

### Water Properties

CAS ID#	COMPOUNDS	RESULT	SOQ	MRL	Units	Method
	Color	ND	5.00	5.00	color	SM2120C, 21Ed
	Color after Acidification	NM	5.00	5.00	color	SM2120C,21Ed
	Conductivity	1.40			microS/cm	120.1
	pH	5.70	8.50			150.1
	Turbidity	0.11	0.50		NTU	180.1 Rev. 2 1993
	Turbidity Filtered	NA	0.50		NTU	180.1 Rev. 2 1993

N.D. - Indicates that the compound was not detected above the Lab's Reporting Limit - MRL

N.A. - Indicates that the compound was not analyzed.

SOQ - Standard of Quality, maximum permissible level of a contaminant in water established by EPA, NPDWR or IBWA.

MRL - Method Reporting Limit.

NA=Not Analyzed      ND=Not Detected      \*=non-TNI accredited      \*\*=IL-IDPH accredited      \*\*\*= MT accredited

NELAP Certifications: IL-100213; PA-68-04623; NY-11756; TX-TX269-2007A

State Certifications: IL-IDPH-17598; CA-2958; MT-CERT0091; IA-369; VT-VT02199; WI-399016200;

CO-IL100213; MI-9988; VA-00466

Maria Mozdzen  
 Analytical Lab Manager

## IBWA STANDARD OF QUALITY REPORT

Hardness						
CAS ID#	COMPOUNDS	RESULT	SOQ	MRL	Units	Method
7440-70-2	Calcium	ND		0.10	mg/L	200.7 R4.4
	Hardness (CaCO3)	ND		0.70	mg/L	200.7 R4.4
7439-95-4	Magnesium	ND		0.10	mg/L	200.7 R4.4
7440-23-5	Sodium	ND		0.10	mg/L	200.7 R4.4

N.D. - Indicates that the compound was not detected above the Lab's Reporting Limit - MRL

N.A. - Indicates that the compound was not analyzed.

SOQ - Standard of Quality, maximum permissible level of a contaminant in water established by EPA, NPDWR or IBWA.

MRL - Method Reporting Limit.

NA=Not Analyzed      ND=Not Detected      \*=non-TNI accredited      \*\*=IL-IDPH accredited      \*\*\*= MT accredited

NELAP Certifications: IL-100213; PA-68-04623; NY-11756; TX-TX269-2007A

State Certifications: IL-IDPH-17598; CA-2958; MT-CERT0091; IA-369; VT-VT02199; WI-399016200;

CO-IL100213; MI-9988; VA-00466

Maria Mozdzen  
 Analytical Lab Manager

## IBWA STANDARD OF QUALITY REPORT

Uncategorized						
CAS ID#	COMPOUNDS	RESULT	SOQ	MRL	Units	Method
	Bicarbonate	0.44			mg/L	SM2320B, 21st ED
	Carbonate	0.00			mg/L	SM2320B, 21st ED
	Contract Lab	See Attached Report				
7440-09-7	Potassium	ND		0.10	mg/L	200.7 R4.4
7631-86-9	Silica	0.76		0.05	mg/L	200.7 R4.4
7440-24-6	Strontium (Sr)	ND		0.05	mg/L	200.7 R4.4
	Total Alkalinity to pH 4.5	0.44			mg/L	SM2320B, 21st ED

N.D. - Indicates that the compound was not detected above the Lab's Reporting Limit - MRL

N.A. - Indicates that the compound was not analyzed.

SOQ - Standard of Quality, maximum permissible level of a contaminant in water established by EPA, NPDWR or IBWA.

MRL - Method Reporting Limit.

NA=Not Analyzed    ND=Not Detected    \*=non-TNI accredited    \*\*=IL-IDPH accredited    \*\*\*= MT accredited

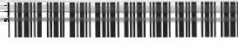
NELAP Certifications: IL-100213; PA-68-04623; NY-11756; TX-TX269-2007A

State Certifications: IL-IDPH-17598; CA-2958; MT-CERT0091; IA-369; VT-VT02199; WI-399016200;

CO-IL100213; MI-9988; VA-00466

Maria Mozdzen  
 Analytical Lab Manager

IBWA STANDARD OF QUALITY REPORT



2405189

P

ANALYSIS REQUEST FORM - 2024

Pace Analytical
Attn: Sample Receiving
8 East Tower Circle
Ormond Beach, FL 32174

IBWA ANNUAL TESTING - FOR CULLIGAN INTERNATIONAL

SAMPLE SUBMITTED BY:

Account Number: 10023746
Account Name: Albuquerque, NM (Crystal Springs)

CULLIGAN BWP INFORMATION:

Dealership Location/Name: Crystal Springs Bottled Water
Address: 4446 Anaheim Ave, NE
City: Albuquerque State: NM Zip: 87113

Phone Number: 505-822-9089
FAX Number: 505-822-8978
E-MAIL: lzamora@acqua1inc.com
Person Taking Sample: Lucas Zamora
Date Sample Taken: 05/08/2024 Time Sample Taken: 7:30 A.M.

SAMPLE INFORMATION (check the appropriate boxes):

Water Supply: Private [ ] Municipal [X]
Source: Surface [ ] Well [ ] Unknown [X]
Condition: Treated [X] Untreated [ ]
Water Type: Premium [ ] Fluoridated [ ] DI [X] Purified [ ]
Demineralized [ ] Spring [ ] RO [ ] Distilled [ ]
Remineralized [ ] Source [ ]

Optional Testing: USP23 [ ] Optional Testing for NY and PA only [ ]

For Questions contact Maria Mozdzen at (847) 430-1219

LAB USE ONLY:

Sample received in acceptable condition: Yes
Received by: NO PA Date: 5-13-24 No Time: 1205
If not, reason:
Disposition of sample:

N.D. - Indicates that the compound was not detected above the Lab's Reporting Limit - MRL
N.A. - Indicates that the compound was not analyzed.
SOQ - Standard of Quality, maximum permissible level of a contaminant in water established by EPA, NPDWR or IBWA.
MRL - Method Reporting Limit.
NA=Not Analyzed ND=Not Detected \*=non-TNI accredited \*\*=IL-IDPH accredited \*\*\*= MT accredited
NELAP Certifications: IL-100213; PA-68-04623; NY-11756; TX-TX269-2007A
State Certifications: IL-IDPH-17598; CA-2958; MT-CERT0091; IA-369; VT-VT02199; WI-399016200;
CO-IL100213; MI-9988; VA-00466

# IBWA STANDARD OF QUALITY REPORT



## Sample Results

Pace Analytical Services, LLC  
8 East Tower Circle  
Ormond Beach, FL 32174  
(386) 672-5668

Client: Culligan International

Client ID: 2405189

Project ID: 2405189

Lab ID: 35880553001

Received 05/18/2024 13:14

Pace Project 35880553

Collected: 05/18/2024 13:13

Matrix: Drinking Water

Parameters	Report Limit	Results	Units	FDA Limit	Above/Below Limit	IBWA Limit	Above/Below Limit
<b>504.1 GCS EDB and DBCP</b>							
Analytical Method: EPA 504.1		Preparation Method: EPA 504.1					
1,2-Dibromo-3-chloropropane	0.0067	<0.0067	ug/L	0.2	Below	0.2	Below
1,2-Dibromoethane (EDB)	0.0078	<0.0078	ug/L	0.05	Below	0.05	Below
<b>505 GCS PCB-TOX-TCH</b>							
Analytical Method: EPA 505		Preparation Method: EPA 505					
Chlordane (Technical)	0.036	<0.036	ug/L	2	Below	0.5	Below
PCB-1016 (Aroclor 1016)	0.045	<0.045	ug/L				
PCB-1221 (Aroclor 1221)	0.041	<0.041	ug/L				
PCB-1232 (Aroclor 1232)	0.048	<0.048	ug/L				
PCB-1242 (Aroclor 1242)	0.032	<0.032	ug/L				
PCB-1248 (Aroclor 1248)	0.026	<0.026	ug/L				
PCB-1254 (Aroclor 1254)	0.038	<0.038	ug/L				
PCB-1260 (Aroclor 1260)	0.030	<0.030	ug/L				
PCB, Total	0.046	<0.046	ug/L	0.5	Below	0.5	Below
Toxaphene	0.28	<0.28	ug/L	3	Below	3	Below
<b>515.3 Chlorinated Herbicides</b>							
Analytical Method: EPA 515.3		Preparation Method: EPA 515.3					
2,4-D	0.096	<0.096	ug/L	70	Below	70	Below
Dalapon	0.49	<0.49	ug/L	200	Below	200	Below
Dinoseb	0.16	<0.16	ug/L	7	Below	7	Below
Perchlorophenol	0.014	<0.014	ug/L	1	Below	1	Below
Picloram	0.040	<0.040	ug/L	500	Below	500	Below
2,4,5-TP (Silvex)	0.059	<0.059	ug/L	50	Below	10	Below
<b>525.3 Pesticides Semivolatiles</b>							
Analytical Method: EPA 625.3		Preparation Method: EPA 625.3					
Alachlor	0.030	<0.030	ug/L	2	Below	2	Below
Atrazine	0.015	<0.015	ug/L	3	Below	3	Below
Benzo(a)pyrene	0.020	<0.020	ug/L	0.2	Below	0.2	Below
gamma-BHC (Lindane)	0.0029	<0.0029	ug/L	0.2	Below	0.2	Below
Endrin	0.0024	<0.0024	ug/L	2	Below	2	Below
bis(2-Ethylhexyl)adipate	0.36	<0.36	ug/L	400	Below	400	Below
bis(2-Ethylhexyl)phthalate	0.47	<0.47	ug/L	6	Below	6	Below
Heptachlor	0.014	<0.014	ug/L	0.4	Below	0.4	Below
Heptachlor epoxide	0.0031	<0.0031	ug/L	0.2	Below	0.2	Below
Hexachlorobenzene	0.015	<0.015	ug/L	1	Below	1	Below
Hexachlorocyclopentadiene	0.025	<0.025	ug/L	50	Below	50	Below
Methoxychlor	0.024	<0.024	ug/L	40	Below	40	Below
Simazine	0.040	<0.040	ug/L	4	Below	4	Below
<b>531.2 HPLC Carbamates</b>							
Analytical Method: EPA 531.2		Preparation Method: EPA 531.2					
Aldicarb	0.38	<0.38	ug/L			3	Below
Aldicarb sulfone	0.58	<0.58	ug/L			3	Below
Aldicarb sulfoxide	0.47	<0.47	ug/L			4	Below
Carbofuran	0.59	<0.59	ug/L	40	Below	40	Below
Oxamyl	0.46	<0.46	ug/L	200	Below	200	Below
<b>547 HPLC Glyphosate</b>							
Analytical Method: EPA 547		Preparation Method: EPA 547					
Glyphosate	4.2	<4.2	ug/L	700	Below	700	Below
<b>549.2 HPLC Paraquat Diquat</b>							
Analytical Method: EPA 549.2		Preparation Method: EPA 549.2					
Diquat	0.16	<0.16	ug/L	20	Below	20	Below
<b>552.3 Haloacetic Acids</b>							
Analytical Method: EPA 552.3		Preparation Method: EPA 552.3					

06/12/2024 09:56:02

N.D. - Indicates that the compound was not detected above the Lab's Reporting Limit - MRL

N.A. - Indicates that the compound was not analyzed.

SOQ - Standard of Quality, maximum permissible level of a contaminant in water established by EPA, NPDPWR or IBWA.

MRL - Method Reporting Limit.

NA=Not Analyzed ND=Not Detected \*non-TNI accredited \*\*=IL-IDPH accredited \*\*\*= MT accredited

NELAP Certifications: IL-100213; PA-68-04623; NY-11756; TX-TX269-2007A

State Certifications: IL-IDPH-17598; CA-2958; MT-CERT0091; IA-369; VT-VT02199; WI-399016200;

CO-IL100213; MI-9988; VA-00466

Maria Mozdzen  
Analytical Lab Manager



# IBWA STANDARD OF QUALITY REPORT



## Sample Results

Pace Analytical Services, LLC  
8 East Tower Circle  
Ormond Beach, FL 32174  
(386) 672-5668

Client: Culligan International

Client ID: 2405189

Project ID: 2405189

Lab ID: 35880553001

Received 05/18/2024 13:14

Pace Project 35880553

Collected: 05/18/2024 13:13

Matrix: Drinking Water

Parameters	Report Limit	Results	Units	FDA Limit	Above/Below Limit	IBWA Limit	Above/Below Limit
<b>552.3 Haloacetic Acids</b>		Analytical Method: EPA 552.3		Preparation Method: EPA 552.3			
Dibromoacetic Acid	0.43	<0.43	ug/L				
Dichloroacetic Acid	0.39	<0.39	ug/L				
Haloacetic Acids (Total)	0.90	<0.90	ug/L	60	Below	60	Below
Monobromoacetic Acid	0.46	<0.46	ug/L				
Monochloroacetic Acid	0.90	<0.90	ug/L				
Trichloroacetic Acid	0.40	<0.40	ug/L				
<b>548.1 GCS Endothall</b>		Analytical Method: EPA 548.1		Preparation Method: EPA 548.1			
Endothall	3.3	<3.3	ug/L	100	Below	100	Below
<b>8270 M5SV Semivolatile</b>		Analytical Method: EPA 8270		Preparation Method: EPA 3510			
Phenol	0.052	<0.052	ug/L	1	Below	1	Below
<b>524.2 MSV</b>		Analytical Method: EPA 524.2					
Benzene	0.40	<0.40	ug/L	5	Below	1	Below
Bromodichloromethane	0.50	2.4	ug/L				
Bromoform	0.48	<0.48	ug/L				
Carbon tetrachloride	0.36	<0.36	ug/L	5	Below	2	Below
Chlorobenzene	0.31	<0.31	ug/L	100	Below	50	Below
Chloroform	0.75	2.5	ug/L				
Dibromochloromethane	0.47	1.2	ug/L				
1,2-Dichlorobenzene	0.40	<0.40	ug/L	600	Below	600	Below
1,3-Dichlorobenzene	0.29	<0.29	ug/L			800	Below
1,4-Dichlorobenzene	0.33	<0.33	ug/L	75	Below	75	Below
1,1-Dichloroethane	0.71	<0.71	ug/L			50	Below
1,2-Dichloroethane	0.30	<0.30	ug/L	5	Below	2	Below
1,1-Dichloroethane	0.37	<0.37	ug/L	7	Below	2	Below
cis-1,2-Dichloroethane	0.33	<0.33	ug/L	70	Below	70	Below
trans-1,2-Dichloroethane	0.33	<0.33	ug/L	100	Below	100	Below
1,2-Dichloropropane	0.44	<0.44	ug/L	5	Below	5	Below
Ethylbenzene	0.37	<0.37	ug/L	700	Below	700	Below
Methylene Chloride	0.46	0.53J	ug/L	5	Below	3	Below
Methyl-tert-butyl ether	0.36	<0.36	ug/L			70	Below
Naphthalene	0.48	<0.48	ug/L			300	Below
Styrene	0.27	<0.27	ug/L	100	Below	100	Below
1,1,2,2-Tetrachloroethane	0.41	<0.41	ug/L			1	Below
Tetrachloroethane	0.41	<0.41	ug/L	5	Below	1	Below
Toluene	0.28	<0.28	ug/L	1000	Below	1000	Below
Total Trihalomethanes (Calc.)	0.75	6.1	ug/L	80	Below	10	Below
1,2,4-Trichlorobenzene	0.35	<0.35	ug/L	70	Below	9	Below
1,1,1-Trichloroethane	0.29	<0.29	ug/L	200	Below	30	Below
1,1,2-Trichloroethane	0.34	<0.34	ug/L	5	Below	3	Below
Trichloroethane	0.26	<0.26	ug/L	5	Below	1	Below
Vinyl chloride	0.41	<0.41	ug/L	2	Below	2	Below
Xylene (Total)	0.42	<0.42	ug/L	10000	Below	1000	Below
<b>537.1 PFAS Compounds, Water</b>		Analytical Method: EPA 537.1		Preparation Method: EPA 537.1			
11Cl-PF3OUdS	0.0018	<0.0016	ug/L			0.005	Below
9Cl-PF3ONS	0.0011	<0.0011	ug/L			0.005	Below
ADONA	0.00072	<0.00072	ug/L			0.005	Below
HFPO-DA	0.0016	<0.0016	ug/L			0.005	Below

06/12/2024 09:55:02

N.D. - Indicates that the compound was not detected above the Lab's Reporting Limit - MRL

N.A. - Indicates that the compound was not analyzed.

SOQ - Standard of Quality, maximum permissible level of a contaminant in water established by EPA, NPDWR or IBWA.

MRL - Method Reporting Limit.

NA=Not Analyzed ND=Not Detected \*=non-TNI accredited \*\*=IL-IDPH accredited \*\*\*= MT accredited


NELAP Certifications: IL-100213; PA-68-04623; NY-11756; TX-TX269-2007A

State Certifications: IL-IDPH-17598; CA-2958; MT-CERT0091; IA-369; VT-VT02199; WI-399016200;

CO-IL100213; MI-9988; VA-00466

Maria Mozden  
Analytical Lab Manager

## IBWA STANDARD OF QUALITY REPORT

	<b>Sample Results</b>	Pace Analytical Services, LLC 8 East Tower Circle Ormond Beach, FL 32174 (386) 672-5668
---	-----------------------	--

Client: Culligan International

Client ID: 2405189

Project ID: 2405189

Lab ID: 35880553001

Received 05/18/2024 13:14

Pace Project 35880553

Collected: 05/18/2024 13:13

Matrix: Drinking Water

Parameters	Report Limit	Results	Units	FDA Limit	Above/Below Limit	IBWA Limit	Above/Below Limit
<b>537.1 PFAS Compounds, Water</b>		Analytical Method: EPA 537.1		Preparation Method: EPA 537.1			
NEtFOSAA	0.00093	<0.00093	ug/L			0.005	Below
NMeFOSAA	0.0016	<0.0016	ug/L			0.005	Below
Perfluorobutanesulfonic acid (PFBS)	0.00066	<0.00066	ug/L			0.005	Below
Perfluorodecanolic acid (PFDA)	0.00097	<0.00097	ug/L			0.005	Below
Perfluorohexanoic acid (PFHxA)	0.0013	<0.0013	ug/L			0.005	Below
Perfluorododecanoic acid (PFDoA)	0.0015	<0.0015	ug/L			0.005	Below
Perfluorooctanoic acid (PFHxA)	0.0010	<0.0010	ug/L			0.005	Below
Perfluorohexanesulfonic acid (PFHxS)	0.00073	<0.00073	ug/L			0.005	Below
Perfluorononanoic acid (PFNA)	0.0020	<0.0020	ug/L			0.005	Below
Perfluorooctanesulfonic acid (PFOS)	0.0012	<0.0012	ug/L			0.005	Below
Perfluorooctanoic acid (PFOA)	0.00087	<0.00087	ug/L			0.005	Below
Perfluorotetradecanoic acid (PFTeDA)	0.0019	<0.0019	ug/L			0.005	Below
Perfluorotridecanoic acid (PFTrDA)	0.0017	<0.0017	ug/L			0.005	Below
Perfluoroundecanoic acid (PFUnA)	0.0020	<0.0020	ug/L			0.005	Below
<b>Total PFAs</b>	0.0019	<0.0019	ug/L			0.01	Below
<b>900.0 Gross Alpha/Beta</b>		Analytical Method: EPA 900.0					
Gross Alpha	1.56	1.56U	pCi/L	15	Below	15	Below
Gross Beta	1.58	1.58U	pCi/L	50	Below	50	Below
<b>903.1 Radium 226, DW</b>		Analytical Method: EPA 903.1					
Radium-226	0.690	0.690U	pCi/L	5	Below	5	Below
<b>904.0 Radium 228, DW</b>		Analytical Method: EPA 904.0					
Radium-228	0.661	0.661U	pCi/L	5	Below	5	Below
<b>300.0 IC Anions</b>		Analytical Method: EPA 300.0					
Nitrate as N	0.025	<0.025	mg/L	10	Below	10	Below
Nitrate-Nitrite (as N)	0.050	<0.050	mg/L				
Nitrite as N	0.025	<0.025	mg/L	1	Below	1	Below
<b>300.1 Oxihalide IC Anions 14d</b>		Analytical Method: EPA 300.1					
Chlorite	0.56	<0.56	ug/L	1000	Below	1000	Below
<b>335.4 Cyanide, Total</b>		Analytical Method: EPA 335.4		Preparation Method: EPA 335.4			
Cyanide	0.0050	<0.0050	mg/L	0.2	Below	0.2	Below

06/12/2024 08:56:02

N.D. - Indicates that the compound was not detected above the Lab's Reporting Limit - MRL

N.A. - Indicates that the compound was not analyzed.

SOQ - Standard of Quality, maximum permissible level of a contaminant in water established by EPA, NPDWR or IBWA.

MRL - Method Reporting Limit.

NA=Not Analyzed      ND=Not Detected      \*=non-TNI accredited      \*\*=IL-IDPH accredited      \*\*\*= MT accredited

NELAP Certifications: IL-100213; PA-68-04623; NY-11756; TX-TX269-2007A

State Certifications: IL-IDPH-17598; CA-2958; MT-CERT0091; IA-369; VT-VT02199; WI-399016200;

CO-IL100213; MI-9988; VA-00466

Maria Mozden  
Analytical Lab Manager

# IBWA STANDARD OF QUALITY REPORT



## Definitions/Qualifiers

Pace Analytical Services, LLC  
8 East Tower Circle  
Ormond Beach, FL 32174  
(386) 672-5668

Pace Project 35880553

### DEFINITIONS

- DF Dilution Factor
- J Estimated concentration above the adjusted method detection limit and below the adjusted reporting
- U Indicates the compound was analyzed for, but not detected.
- MDL Adjusted Method Detection Limit
- PQL Practical Quantitation Limit
- ND Not Detected at or above adjusted reporting limit.

### ANALYTE QUALIFIERS

- H2 Extraction or preparation conducted outside EPA method holding time.

06/12/2024 08:58:02

page 7 of 16

N.D. - Indicates that the compound was not detected above the Lab's Reporting Limit - MRL

N.A. - Indicates that the compound was not analyzed.

SOQ - Standard of Quality, maximum permissible level of a contaminant in water established by EPA, NPDWR or IBWA.

MRL - Method Reporting Limit.

NA=Not Analyzed      ND=Not Detected      \*=non-TNI accredited      \*\*=IL-IDPH accredited      \*\*\*= MT accredited

NELAP Certifications: IL-100213; PA-68-04623; NY-11756; TX-TX269-2007A

State Certifications: IL-IDPH-17598; CA-2958; MT-CERT0091; IA-369; VT-VT02199; WI-399016200;

CO-IL100213; MI-9988; VA-00466

Maria Mozden  
Analytical Lab Manager

## IBWA STANDARD OF QUALITY REPORT



Pace Analytical Services, LLC.  
 1700 Elm Street  
 Minneapolis, MN 55414

### Drinking Water Analysis Results 2,3,7,8-TCDD -- USEPA Method 1613B

Tel 612-607-1700  
 Fax 612-607-6444

Sample ID..... 2405189	Date Collected..... 05/18/2024
Client..... PASI Florida	Date Received..... 05/21/2024
Lab Sample ID..... 35880553001	Date Extracted..... 05/23/2024

	Sample 2405189	Method Blank	Lab Spike	Lab Spike Dup
[2,3,7,8-TCDD]	ND	ND	--	--
EDL	0.67 pg/L	1.1 pg/L	--	--
2,3,7,8-TCDD Recovery	--	--	111%	116%
Spike Recovery Limit	--	--	73-146%	73-146%
RPD				4.0%
IS Recovery	81%	95%	84%	75%
IS Recovery Limits	31-137%	31-137%	25-141%	25-141%
CS Recovery	90%	99%	98%	89%
CS Recovery Limits	42-164%	42-164%	37-158%	37-158%
Filename	E240528B_19	E240526A_07	E240526A_03	E240526A_04
Analysis Date	05/29/2024	05/26/2024	05/26/2024	05/26/2024
Analysis Time	05:22	13:45	11:32	12:05
Analyst	SMT	JRH	JRH	JRH
Volume	0.991L	0.980L	0.973L	0.984L
Dilution	NA	NA	NA	NA
ICAL Date	04/17/2024	04/17/2024	04/17/2024	04/17/2024
CCAL Filename	E240528B_02	E240526A_02	E240526A_02	E240526A_02

- I = Outside the Control Limits
- ND = Not Detected
- EDL = Estimated Detection Limit
- Limits = Control Limits from Method 1613 (10/94 Revision), Tables 6A and 7A
- RPD = Relative Percent Difference of Lab Spike Recoveries
- IS = Internal Standard [2,3,7,8-TCDD-<sup>13</sup>C<sub>12</sub>]
- CS = Cleanup Standard [2,3,7,8-TCDD-<sup>37</sup>Cl]

Analyst:

Project No.....10693771

N.D. - Indicates that the compound was not detected above the Lab's Reporting Limit - MRL  
 N.A. - Indicates that the compound was not analyzed.  
 SOQ - Standard of Quality, maximum permissible level of a contaminant in water established by EPA, NPDR or IBWA.  
 MRL - Method Reporting Limit.  
 NA=Not Analyzed      ND=Not Detected      \*=non-TNI accredited      \*\*=IL-IDPH accredited      \*\*\*= MT accredited

NELAP Certifications: IL-100213; PA-68-04623; NY-11756; TX-TX269-2007A  
 State Certifications: IL-IDPH-17598; CA-2958; MT-CERT0091; IA-369; VT-VT02199; WI-399016200;  
 CO-IL100213; MI-9988; VA-00466

Maria Mozdzen  
 Analytical Lab Manager

## IBWA STANDARD OF QUALITY REPORT



Pace Analytical Services, LLC  
1700 Elm Street, Suite 200  
Minneapolis, MN 55414  
Phone: 612.607.1700  
Fax: 612.607.6444  
www.pacelabs.com

### Reporting Flags

- A = Reporting Limit based on signal to noise (EDL)
- B = Less than 10x higher than method blank level
- C = Result obtained from confirmation analysis
- D = Result obtained from analysis of diluted sample
- E = Exceeds calibration range
- H2 = Extracted outside of holding time
- I = Isotope ratio out of specification
- J = Estimated value
- L = Suppressive interference, analyte may be biased low
- Nn = Value obtained from additional analysis
- P = PCDE Interference
- R = Recovery outside target range
- S = Peak saturated
- U = Analyte not detected
- V = Result verified by confirmation analysis
- X = %D Exceeds limits
- Y = Calculated using average of daily RFs

### REPORT OF LABORATORY ANALYSIS

This report shall not be reproduced, except in full,  
without the written consent of Pace Analytical Services, LLC.

Report No.....10693771\_1613DW\_L2.dlr

Page 3 of 7

N.D. - Indicates that the compound was not detected above the Lab's Reporting Limit - MRL

N.A. - Indicates that the compound was not analyzed.

SOQ - Standard of Quality, maximum permissible level of a contaminant in water established by EPA, NPDWR or IBWA.

MRL - Method Reporting Limit.

NA=Not Analyzed      ND=Not Detected      \*=non-TNI accredited      \*\*=IL-IDPH accredited      \*\*\*= MT accredited

NELAP Certifications: IL-100213; PA-68-04623; NY-11756; TX-TX269-2007A

State Certifications: IL-IDPH-17598; CA-2958; MT-CERT0091; IA-369; VT-VT02199; WI-399016200;

CO-IL100213; MI-9988; VA-00466

Maria Mozdzen  
Analytical Lab Manager